
Repair Instructions

Door Replacement - Premium Cabinets

To suit: TPR/TLR/TRI/TBW/TUF cabinets 360/520/750/950/1100/1150/1500

Approvals		
Written By:	Reviewed By:	Approved By:
Duncan Smeaton	Darren Assey	Stephen Watt

Doc ID: TM-007-V1

Revision Date: 25/07/2023

Safety Reminder

These instructions do not purport to address all potential safety issues, if any, associated with the product's use. It is the responsibility of the user of these instructions to establish appropriate safety and health practices and determine the applicability of regulatory limitations before use.





Before attempting any of the following, perform the actions listed below:

- Turn OFF power to the machine.
- Unplug the machine.

Summary

When installing a new door onto a cabinet several factors need to be considered. Safety being the number one and in the case of refrigerated cabinets ensuring the cold chain of the products stored is maintained.

Thermoline recommends this work is carried out by a trained competent person.

Tools Required	
8 mm spanner/socket or Long nose pliers	
Phillips head screw driver	
Short Phillips head screw driver (less than 90mm in length)	
Additional Person	Thermoline recommends the replacement as a two person job.
Packing to hold door	Foam (or alike) packing to hold the doors weight.
Safety Step	

Kit Contents		
Item	Description	Quantity
	Replacement door	1

Section 1: Removal of the door

Turn off the power and unplug the cabinet.

Please make sure the cold chain is maintained (if applicable).

It helps to make sure the front castor locks are on to prevent the cabinet from moving during removal and installation.



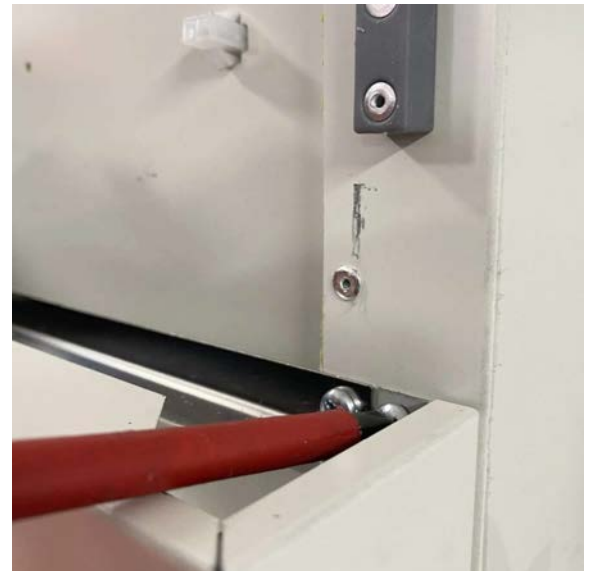
Slide the panel up, freeing it from the locating blocks on the cabinet.



Pull the panel forward free of the blocks. Ensuring the panel doesn't catch on the locating blocks.



Once removed, you will be able to access the fascia panel to continue the process of removing the door.



Remove the screws that hold the fascia in place



Remove the screws that hold the fascia in place



Remove the screws that hold the fascia in place



Unscrew the locking pin under the lock and remove it using long nose pliers.



Can be done by hand in most instances



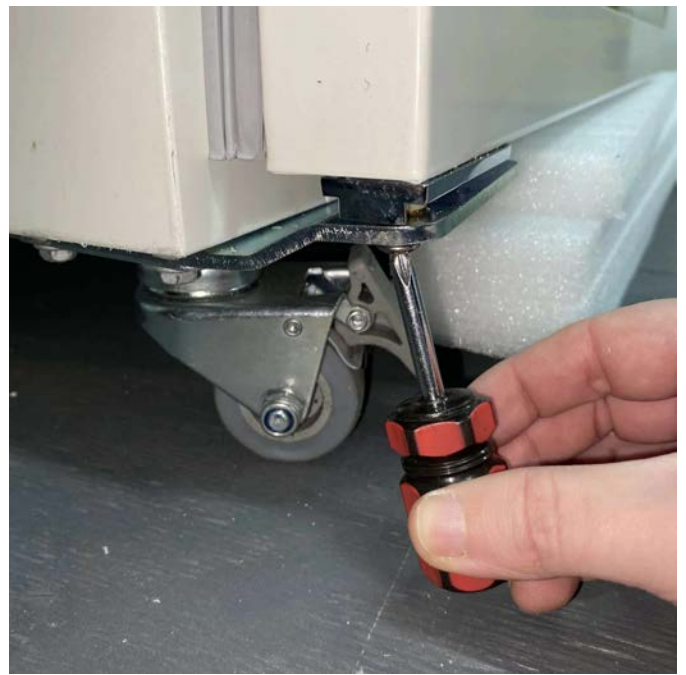
After removing the locking pin and screws, the fascia can now be removed. Be careful, as the controller is still wired.



Gently lift the fascia up and rest it on top of the mounting bracket.



While the door is closed, and before loosening the brackets in the next steps, make sure to place supports underneath to bear the weight. Foam could be used, as shown in the picture, or another suitable support that can handle the weight and not damage the door.



With the support in place, remove the locking screw from the hinge cartridge using the short Phillips head screwdriver.



View from underneath showing the screw to be removed.



The square end will still sit in the plate but will allow the door to be lifted once the top hinge pin bracket is released.



With the locking screw removed, carefully open the door to approximately 90° and reposition the supports.



To access the screws that hold the top hinge pin bracket in place, the door needs to be opened to a 90° angle.



Using the long nose pliers (or 8mm spanner) hold the nut in place and remove the screws from the bottom of the fascia bracket.

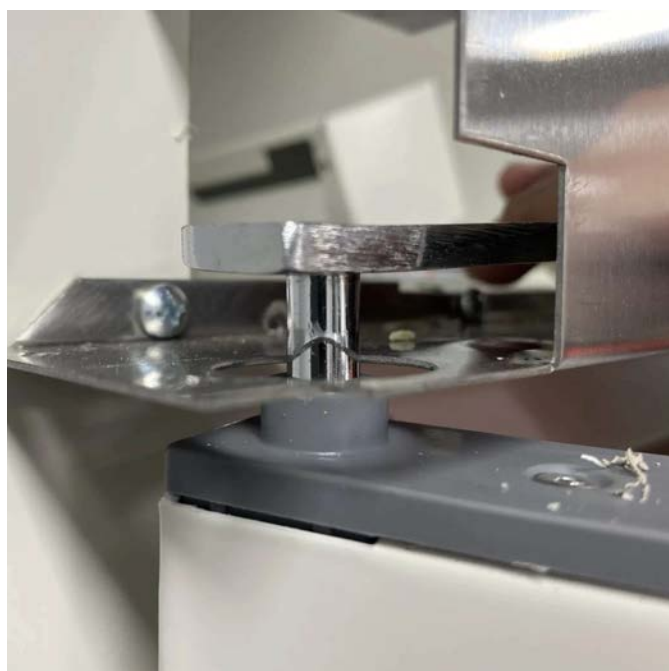
NOTE: Due to the weight, a second person is recommended to assist with holding the door and repositioning it during the installation phase.



NOTE: At this point the door should still hold in place but is not secured.



With the door supported and held, remove the top hinge pin bracket. The door can then be slightly moved away from the cabinet and lifted up off the bottom hinge plate.



After the screws are out, the top hinge pin bracket can be removed.



If the door has been in place for a substantial amount of time, it may require a flathead screwdriver to lever it out of the bottom hinge plate.



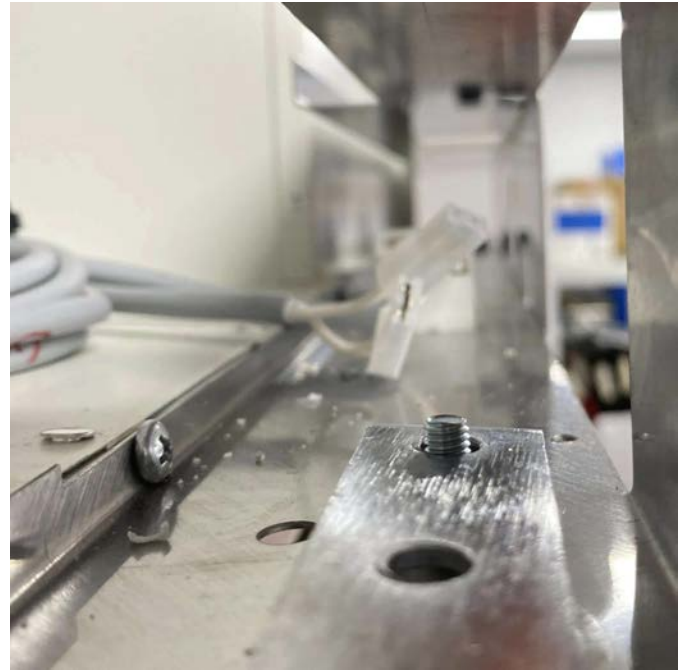
The view of the bottom hinge plate after the door has been lifted off.

Section 3: Installation

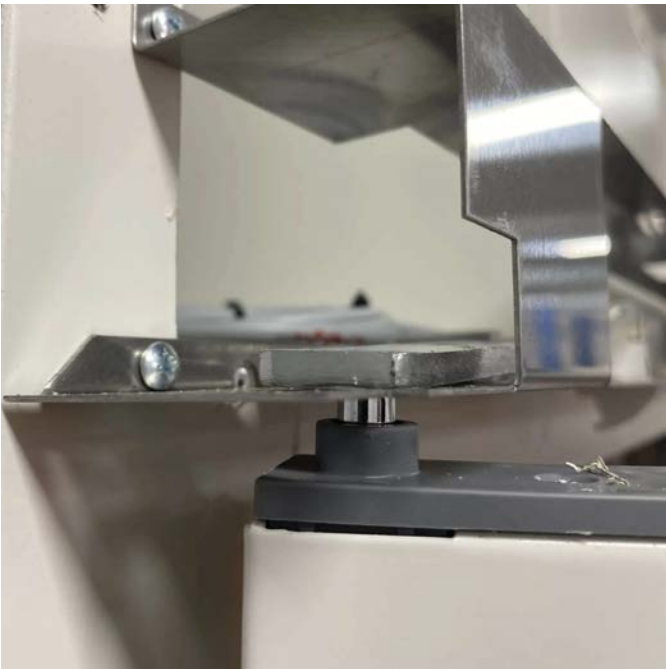
NOTE: Thermoline recommends a second person assist until the door is secure.



Place the square peg at the bottom of the hinge cartridge into the outmost square slot in the bottom hinge plate. The door will need to be at 70° to the cabinet for the peg to slot in.



With the door at approximately 90° to the cabinet, line up the top of the hinge with the appropriate hole in the fascia bracket.



The top hinge pin can then be inserted into the door.



Reinsert the screws and loosely fasten as the door alignment still needs to be checked before tightening.

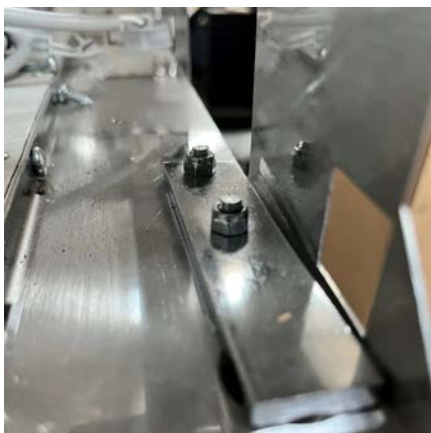


Insert the locking screw through the bottom hinge pin bracket and into the hinge cartridge.

Check the door alignment.

Loosely fastening the nuts in the top hinge plate will create some movement, allowing for proper door alignment. With the door approximately 50 mm from fully closed, check the gap between the door gasket and the cabinet face. This gap needs to be even from top to bottom. If it is not even, you can still slightly move the door.

Next, close the door to check the alignment against the side of the cabinet. If the door is misaligned, it will not be even with the side of the cabinet or along the top of the door. This is important to ensure the door locking pin lines up.



With the door now aligned, you can tighten the nuts entirely using the Philips head screwdriver and long nose pliers (or 8mm spanner).



Place the fascia back over the mounting bracket and replace the screws.



With the fascia fixed in place, screw the lock pin back into place.



Close the door and ensure that the door lock pin lines up with the slot in the door and that the door switch (if applicable) engages.



Reinstall the top panel by placing it slightly above its final position matching the rectangular holes with the locating blocks.



Push the panel forward onto the blocks, then slide it down to lock it into place.



The panel should now be in place and even on all edges.

Section 4: Power ON

Plug the cabinet back in and turn on the power.

Test the door switch if applicable.

Test the cabinet and return the stock (maintaining the cold chain if applicable).

Section 5: Support and Contact

Repair and Support is available over the telephone Monday through Thursday from 8:30am to 4pm and Friday 8:30am to 2pm. Please contact service@thermoline.com.au for email technical support. You can also visit our website at www.thermoline.com.au for access to additional useful troubleshooting guides, operating manuals, and technical information.

Thermoline Scientific Equipment
10-12 Ross Place
Wetherill Park NSW 2164
Ph: 02 9604 3911
Email: hello@thermoline.com.au
Web: www.thermoline.com.au

