

Compliance with GLP and GMP requirements
Resistance to variable ambient conditions
Ergonomic solutions increasing operation comfort
Perfect for laboratory applications



SYNERGY
LAB

AS X2 PLUS **Analytical Balance**

ABSOLUTE PRECISION AND ACCURACY
OF ADVANCED-CLASS INSTRUMENTS

The innovative **AS X2 PLUS** analytical balances guarantee the highest precision and readability along with resistance to variable ambient conditions. New ergonomic solution ensures convenient operation.



Increased Durability and Reliability of long-term operation due to innovative construction solutions.

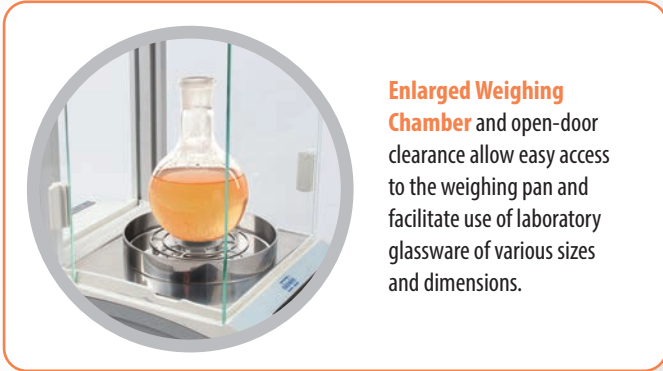


Ensured Accuracy of Indications in extremely challenging conditions due to modernization of internal adjustment system.

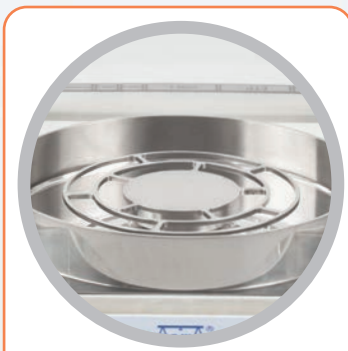


LevelSENSING SYSTEM

The sensors measure tilt and display graphic message on the weighing device screen. Levelling system facilitates adjustment, controls the level state, and informs about level deviations, all this in accordance with GLP and GMP standards.



Enlarged Weighing Chamber and open-door clearance allow easy access to the weighing pan and facilitate use of laboratory glassware of various sizes and dimensions.



Open-Work Weighing Pan

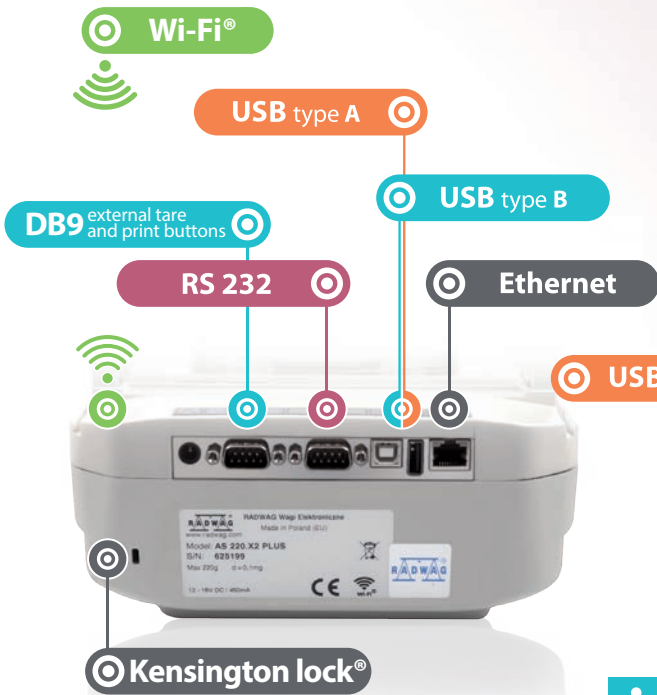
In order to guarantee readability of $d=0.01$ mg it is recommended to use the open-work weighing pan ensuring obtaining standard value of USP minimum weight.



Ease of Communication with peripherals due to placing of the USB interface at the balance front.



Improved **aluminium** base ensuring stability of the weighing system.



Antistatic Weighing Chamber

- compensation of electrostatic charges thanks to specially-designed antistatic glass coating
- elimination of the influence of electrostatics onto the weighing result

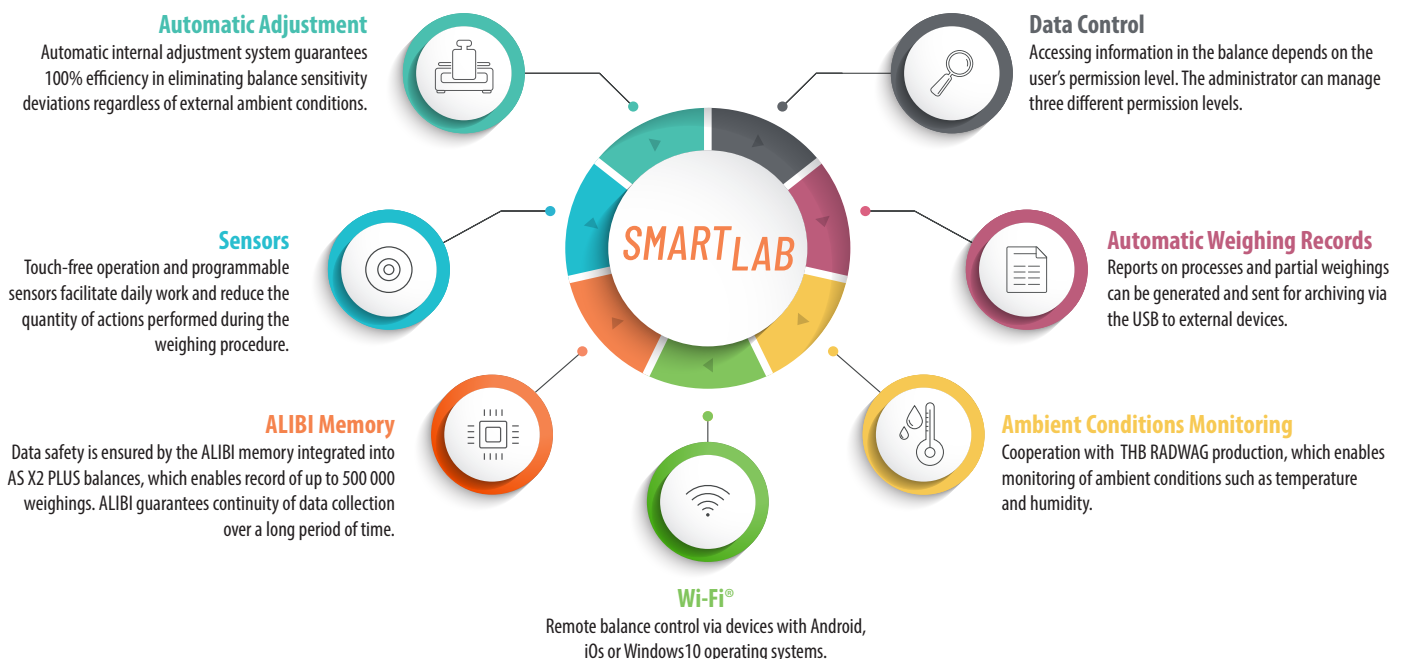
Antistatic coating applied in balances with readability $d=0.01$ will be available in IV quarter of 2020.

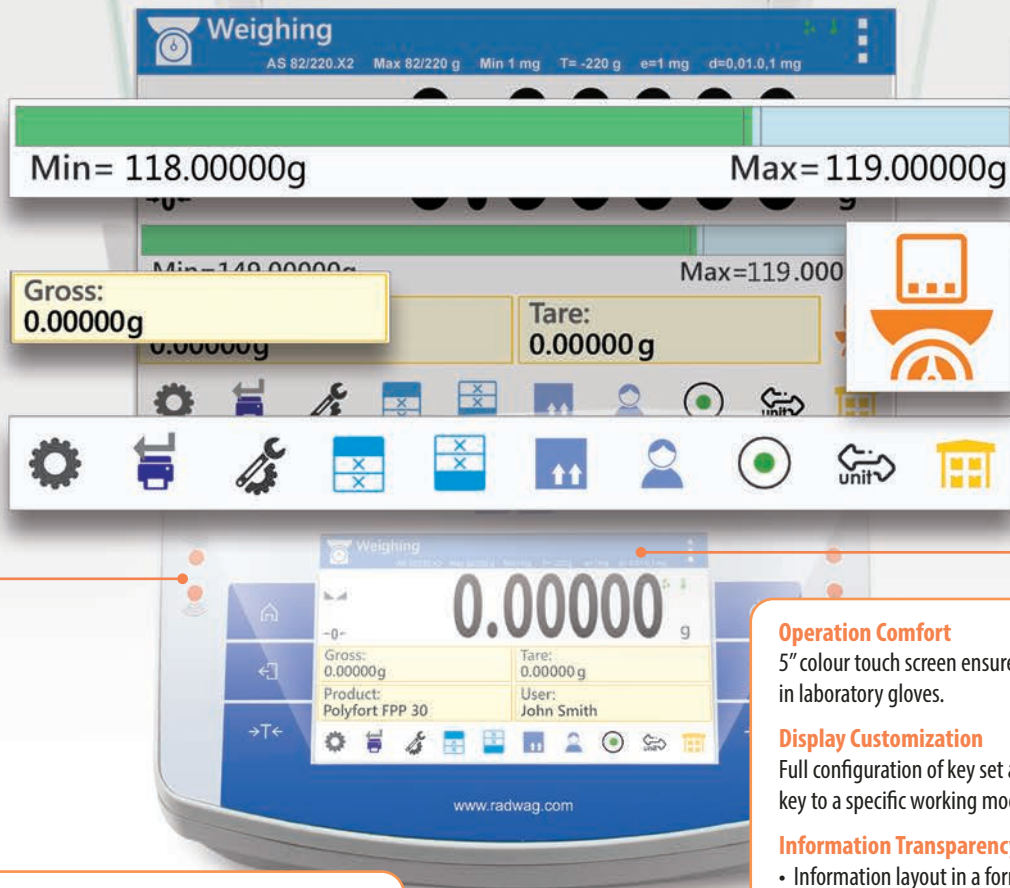
Communication Interfaces

The functionalities of AS X2 PLUS balances can be expanded using the following communication interfaces: USB-A, USB-B, RS 232, DB9, Ethernet, Wi-Fi. The USB port located on the front of the balance enables easy and fast communication with the USB flash drive and connecting additional devices.

- | | | | |
|--------------------------------|----------------------------|-----------------------|--------------------|
| Parts counting | Percent weighing | Density determination | GLP procedures |
| Ambient conditions measurement | Dosing | Statistics | Under-pan weighing |
| Proximity sensors | Replaceable unit | Checkweighing | Animal weighing |
| Peak hold | Cooperation with titrators | Multilingual menu | Formulations |
| Autotest | | | |

by RADWAG – support and supervision over an ongoing mass measurement in the laboratory





- Weighing
- Parts counting
- Checkweighing
- Dosing
- Percent weighing
- Density determination
- Formulation
- Statistics

Proximity Sensors
Two programmable sensors to be freely customized.

Operation Comfort
5" colour touch screen ensures comfort of balance operation even in laboratory gloves.

Display Customization
Full configuration of key set and the possibility to link a particular key to a specific working mode.

Information Transparency

- Information layout in a form of pictograms ensures easy and intuitive operation,
- Flexible configuration of icons, labels and text fields.



AS X2 PLUS
Technical Specification

	AS 60/220.X2	AS 62.X2	AS 82/220.X2	AS 120.X2 NEW	AS 110.X2	AS 160.X2	AS 220.X2	AS 310.X2	AS 520.X2 NEW
Maximum capacity [Max]	60 g / 220 g	62 g	82 g / 220 g	120 g	110 g	160 g	220 g	310 g	520 g
Readability [d]	0.01 mg / 0.1 mg	0.01 mg	0.01 mg / 0.1 mg	0.01 mg	0.1 mg	0.1 mg	0.1 mg	0.1 mg	0.1 mg
Max repeatability (5% Max)*	0.015 mg	0.012 mg	0.015 mg	0.015 mg	0.06 mg	0.07 mg	0.07 mg	0.08 mg	0.08 mg
Max repeatability	0.08 mg	0.02 mg	0.08 mg	0.04 mg	0.08 mg	0.08 mg	0.08 mg	0.12 mg	0.25 mg
Minimum weight USP	30 mg	24 mg	30 mg	30 mg	120 mg	140 mg	140 mg	160 mg	160 mg
Minimum weight	3.0 mg	2.4 mg	3.0 mg	3.0 mg	12 mg	14 mg	14 mg	16 mg	16 mg
Max repeatability (5% Max)*	0.02 mg	0.018 mg	0.02 mg	0.02 mg	0.09 mg	0.09 mg	0.09 mg	0.12 mg	0.12 mg
Max repeatability	0.1 mg	0.03 mg	0.1 mg	0.05 mg	0.1 mg	0.1 mg	0.1 mg	0.15 mg	0.4 mg
Linearity	±0.05 mg / ±0.2 mg	±0.05 mg	±0.05 mg / ±0.2 mg	±0.07 mg	±0.2 mg	±0.2 mg	±0.2 mg	±0.3 mg	±0.4 mg
Stabilization time	2 s	2 s	2 s	2 s	2 s	2 s	2 s	2.5 s	2.5 s
Adjustment	Internal	Internal	Internal	Internal	Internal	Internal	Internal	Internal	Internal
Weighing pan dimensions	ø 90 mm**	ø 90 mm**	ø 90 mm**	ø 90 mm**	ø 100 mm	ø 100 mm	ø 100 mm	ø 100 mm	ø 100 mm
Display	5" colour touchscreen								
Communication interfaces	USB-A, USB-B, RS 232, Ethernet, DB9 external tare print buttons, Wi-Fi®								

Typical values

*Repeatability is expressed as a standard deviation from 10 weighing cycles. | **ø 85 mm standard weighing pan on purchase order | Wi-Fi® is a registered trademark owned by Wi-Fi Alliance organization.